

Welcome to Covad DSL Self-Install!

(4060 USB DSL Modem)

This document describes all the steps you'll need to take to get your new DSL connection up and running. Basically, there are four steps:

1. **Prepare your telephone line**
2. **Connect your DSL hardware**
3. **Install your software**
4. **Configure your Internet connection**

PARTS LIST

The following equipment should be included in your DSL Self-Install kit:

- Efficient Networks 4060 USB DSL Modem
- USB cable
- AC power adapter
- Telephone cable
- 4 standard filters
- Wall filter
- Y-splitter
- Install CD-ROM

Quick Steps

All of the instructions you need to set up your DSL appear in these yellow balloons.

Optional Steps

Some steps appear in these turquoise balloons—these steps are optional.

What are these?

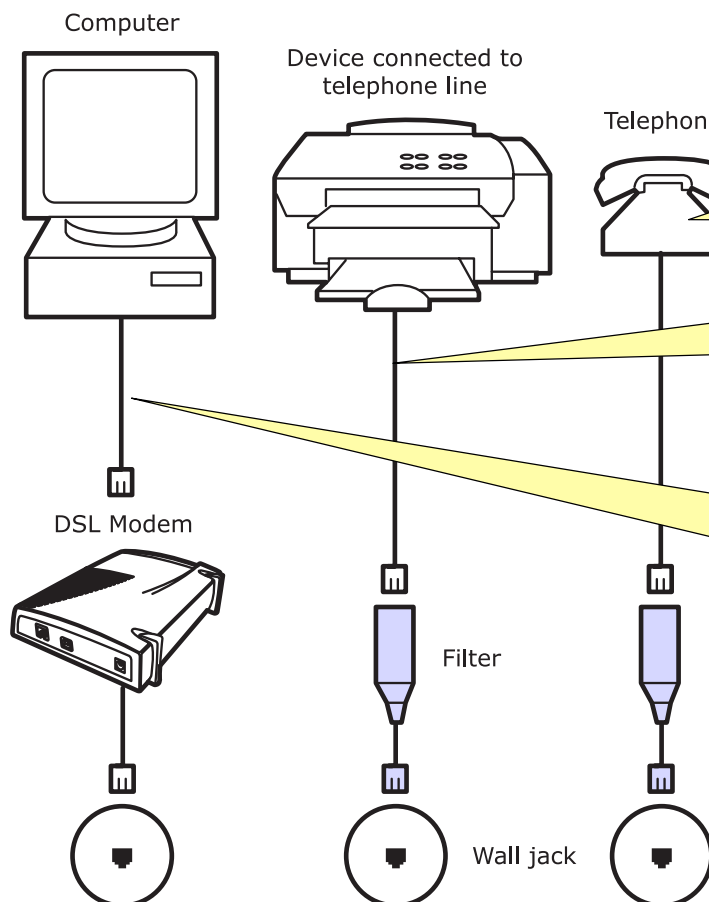
Answers to common questions, helpful **notes**, and **tips** about the DSL Self-Install process appear in these gray boxes.

Follow the instructions on the following pages to set up your new DSL connection.

1 Prepare your telephone line

Before installing your DSL, you must prepare your telephone jacks so that your DSL connection does not conflict with other devices. To do so, connect a **filter** to every telephone jack in your house that has a device—telephone, answering machine, caller-ID unit, fax machine, etc.—plugged into it.

To connect your filters:



Need more filters?

This kit is shipped with 5 filters. If you need more, additional filters can be purchased through your ISP/Covad, or at major electronics stores (like Radio Shack).

Plug the cord from your telephone into an included **filter**. Then plug the filter into the wall jack. Do this for every telephone in your house.

If you have other devices connected to your telephone line, install **filters** on them as well, as you did for your telephone.

Plug your computer into your DSL unit (this is described in section 2), then plug the unit directly into a wall jack—**do not connect a filter** to the DSL cable.

Using a dial-up modem?

If you'd like to continue using your existing dial-up modem, plug the telephone cord from it into a filter. Then plug the filter into the wall jack.

More than 1 phone line?

If you have more than one telephone line in your house, you need only plug filters into jacks that will carry your DSL connection. If you're not sure which line carries your DSL, put filters on all of your jacks.

✓ Did I do it right?

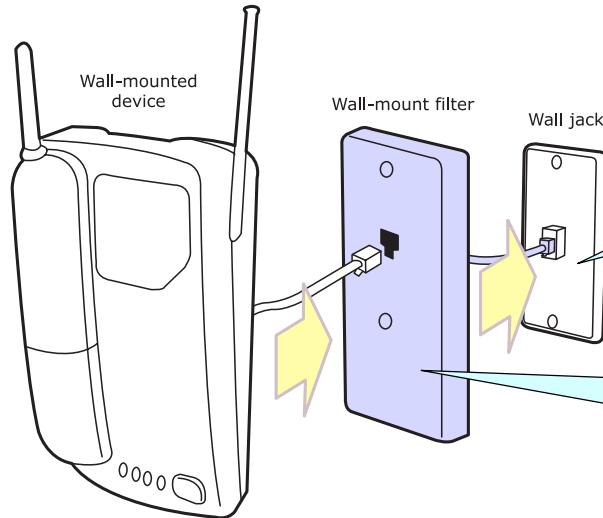
If you connected your filters correctly:

- Filters should be attached to all phone lines that carry the DSL signal
- All devices connected to telephone lines should work (check for dial tones)

For 24-hour DSL Self-Install assistance call 1-800-555-2345

Wall-mounted telephone?

If you have a wall-mounted telephone or other device, you'll need to install a filter on it, too. Follow these steps to install the included **wall-mount filter**.



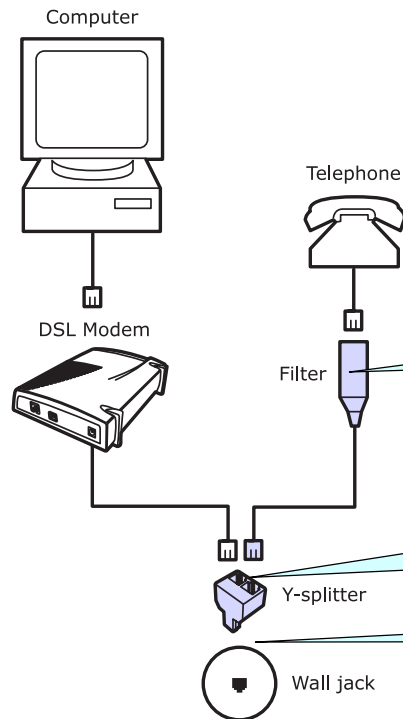
1. Remove the device from the wall and unplug its telephone cord from the wall jack.

2. Plug the telephone cord on the **wall-mount filter** into the wall jack, then attach the filter to the wall plate.

3. Plug the device's telephone cord into the wall-mount filter. Then attach it to the wall using the filter's mounting pegs.

Sharing the DSL wall jack with another device?

You can plug both your DSL modem *and* a telephone (or other device) into the same telephone jack using the included **Y-splitter**. Follow these steps to install the Y-splitter.



Using the wall-mount filter?

You can also use the **wall-mount filter** as a Y-splitter by plugging the DSL line into the jack labeled LINE on the bottom of the filter. Plug the other device into the jack on the front of the wall-mount filter.

1. Plug your device's telephone cord into a **filter**.

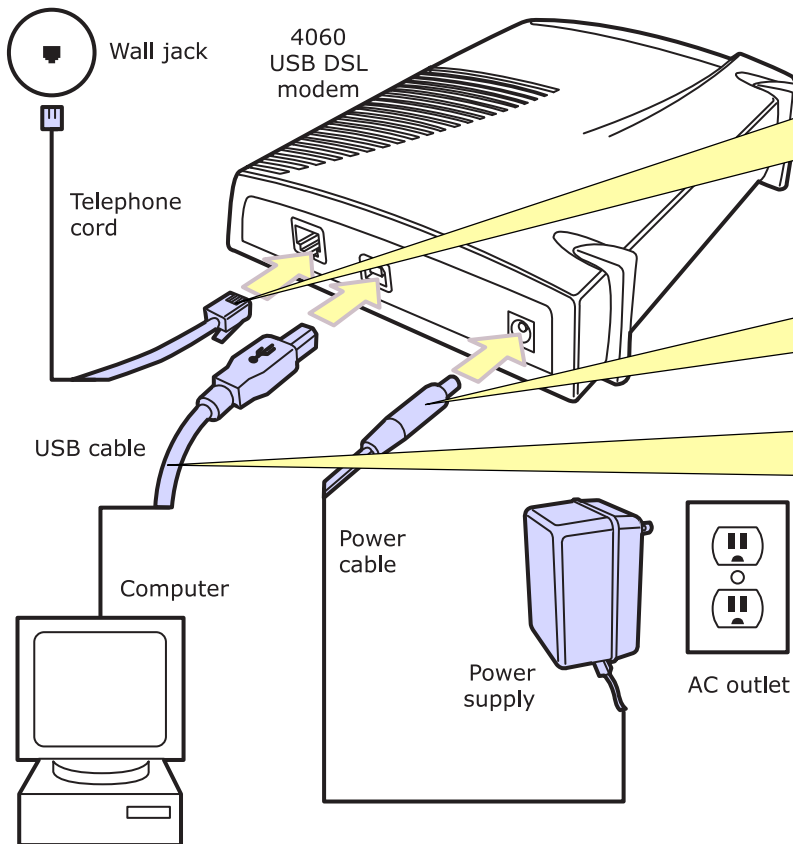
2. Plug the filter into either jack of the enclosed **Y-splitter**. (You will plug your DSL modem into the other jack later on.)

3. Plug the Y-splitter into your wall jack.

2 Connect your hardware (4060 USB DSL Modem)

Once you have installed filters on your telephone jacks, you can connect your DSL equipment.

To connect your DSL modem:



1. Turn on your computer.

2. Plug one end of your **telephone cord** into the **DSL port** on your modem. Plug the other end into a nearby telephone jack.

3. Plug this end of the **power cable** into your DSL modem. Plug the other end into a nearby power outlet.

4. Connect this end of the **USB cable** to your DSL modem. Plug the other end into an available **USB port** on your computer.

✓ Did I do it right?

If you have connected your DSL modem properly:

- The light on the front of your DSL modem should be yellow
- All devices connected to telephone lines should work (check for dial tones)

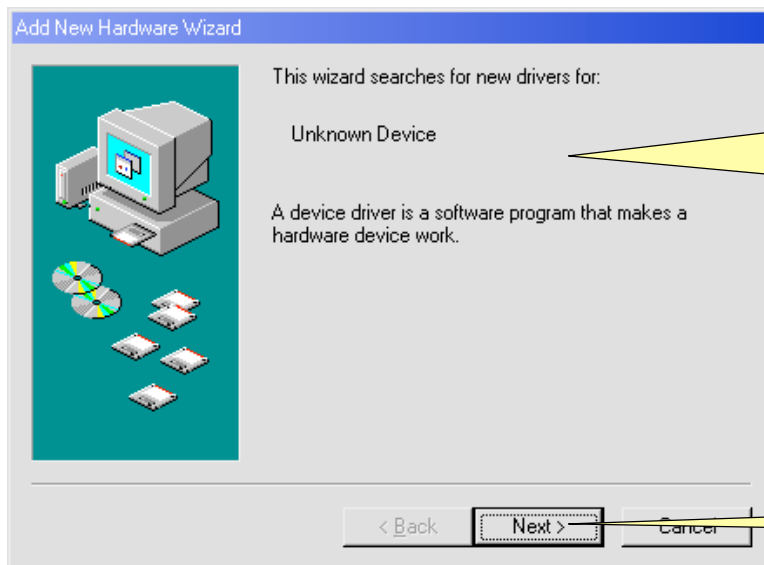
3 Install your software (4060 USB DSL Modem)

Once you have installed your filters and connected your modem's power, USB, and DSL lines, you're ready to install the software you need to use your DSL service.

To install your software:

Make a mistake?

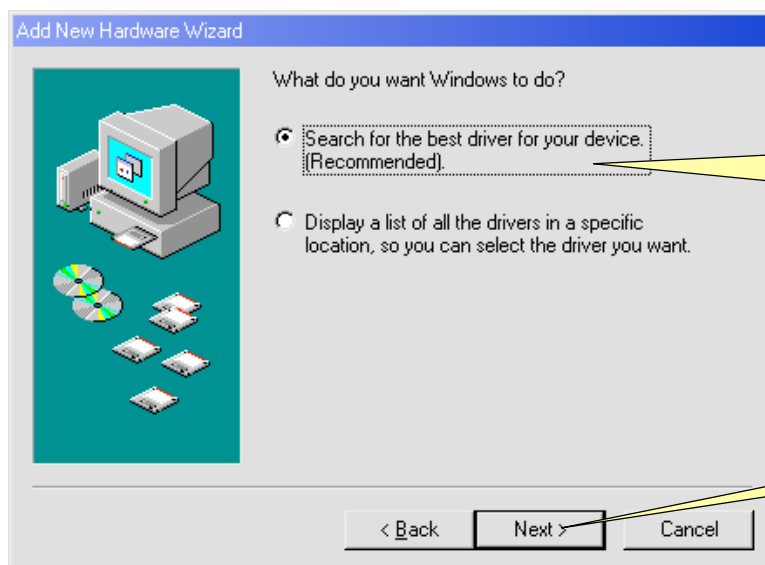
On most screens in the installation process, you can return to the previous window to fix a mistake or make a change by clicking the **Back** button.



1. After you have connected your DSL modem, you should have seen a series of small windows pop up on your screen, followed by this one.

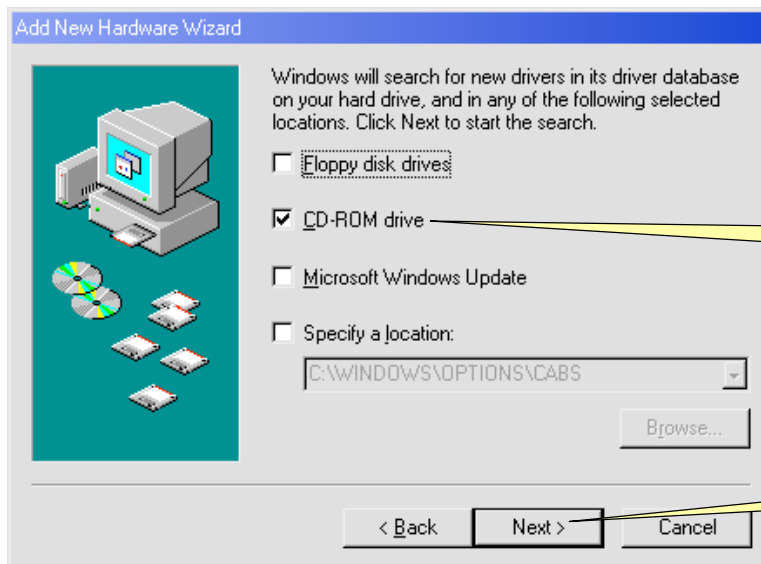
2. Insert the **Modem Install CD-ROM** into your computer.

3. Click **Next**.



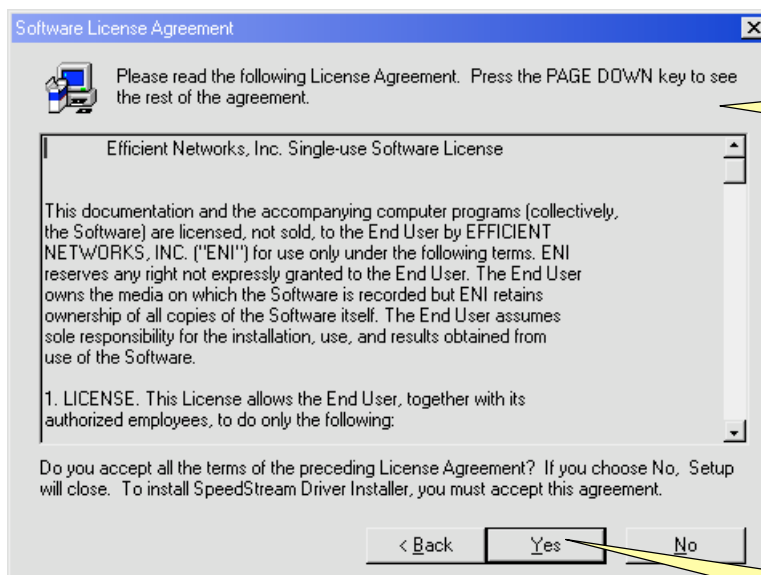
4. Make sure this is selected. (Click the round button next to it to select it.)

5. Click **Next**.



6. Check **only** "CD-ROM drive".

7. Click **Next**.

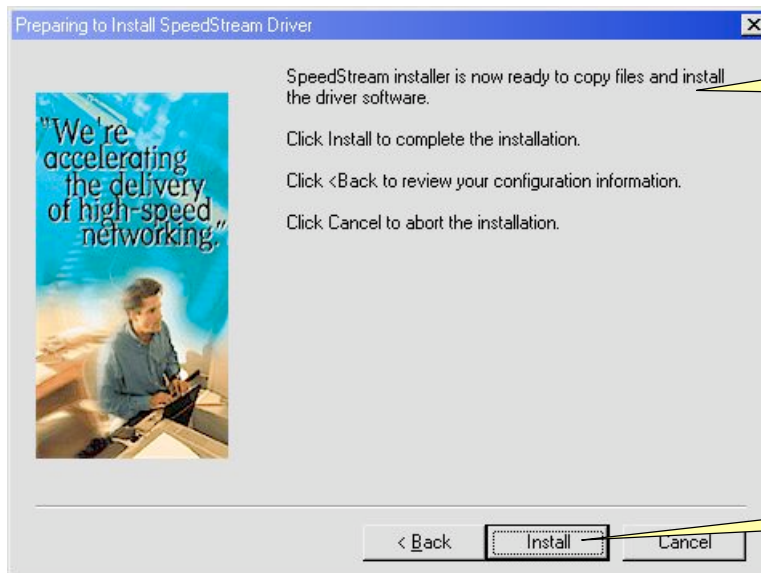


8. Click **Next** until you see the "**Software License Agreement**" window.

File not found?
If you receive a "File not found" message, try these solutions:

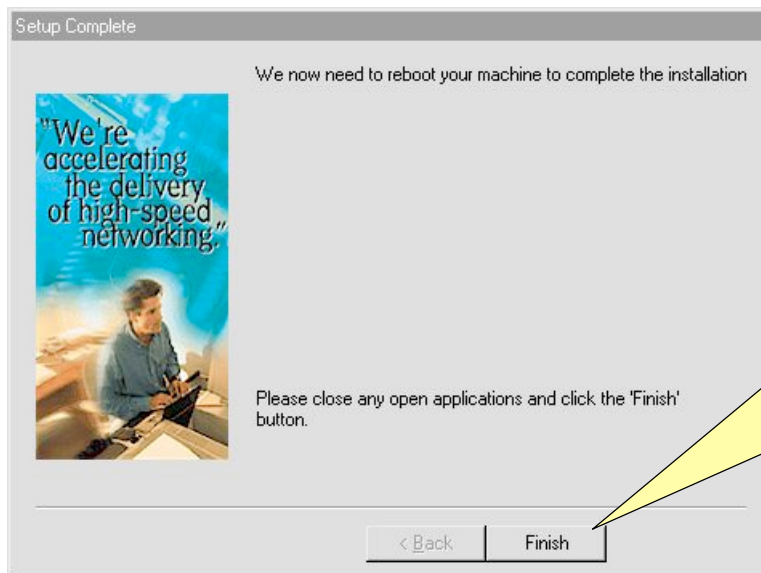
- Wait a few moments, then click **Retry**
- Reinsert the **Modem Install CD-ROM**

9. Read the Software License Agreement, then click **Yes**.



10. Click **Next** until you see the "**Preparing to Install...**" window.

11. Click **Install**.



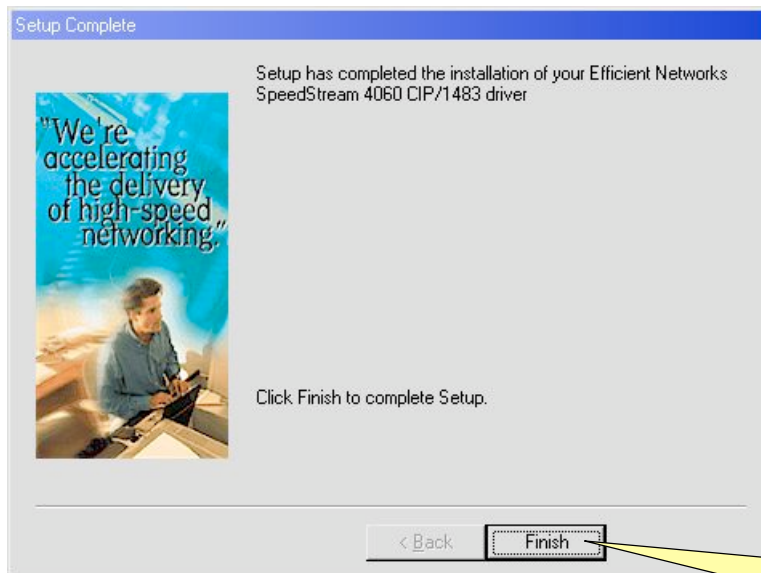
12. After a series of loading windows, you should see the "**Setup Complete**" window. You will now need to restart your computer. Click **Finish**.



RESTART

Replace files?

Before your computer restarts, you may be asked if you want to replace existing files on your computer with new ones. You should **keep your old files**. To keep your old files, click **Yes** when asked.



13. When you see the **“System Setting Changes”** window, it will ask you to complete the installation process by restarting your computer. To do so, click **Yes** in the window.



14. Finally, when you see the **“Setup Complete”** window, click **Finish** to complete the installation process.

✓ Did I do it right?

If you have installed your software properly:

- You should see the **“Driver Not Loaded”** icon for your modem in your system tray:



Driver Not Loaded icon

4 Configure your Internet connection

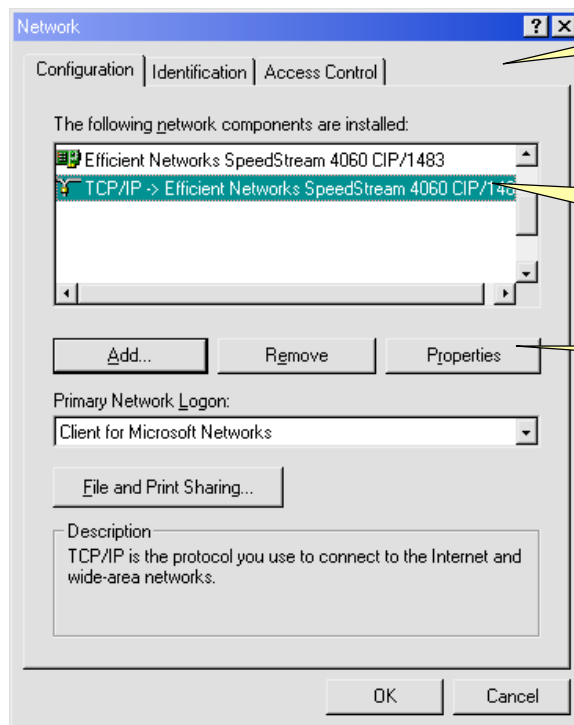
(Static IP for Windows 95/98)

In order to configure your Internet connection, you will need to refer to the **Configuration Information** provided to you by your Internet Service Provider (ISP). This information should appear on the **bottom of the packing slip** for your Self-Install kit. Otherwise, you will need to contact your ISP to get your configuration information. You can write the information in the spaces above.

Can't find your Configuration Info?

Your Configuration Information should appear at the bottom of your packing slip.

To configure your Internet connection:



1. Go to **My Computer** → **Control Panel** folder → **Network**.

2. In the **Configuration** tab, select the **TCP/IP -> Efficient Networks...** item in the list. Make sure to select only this item.

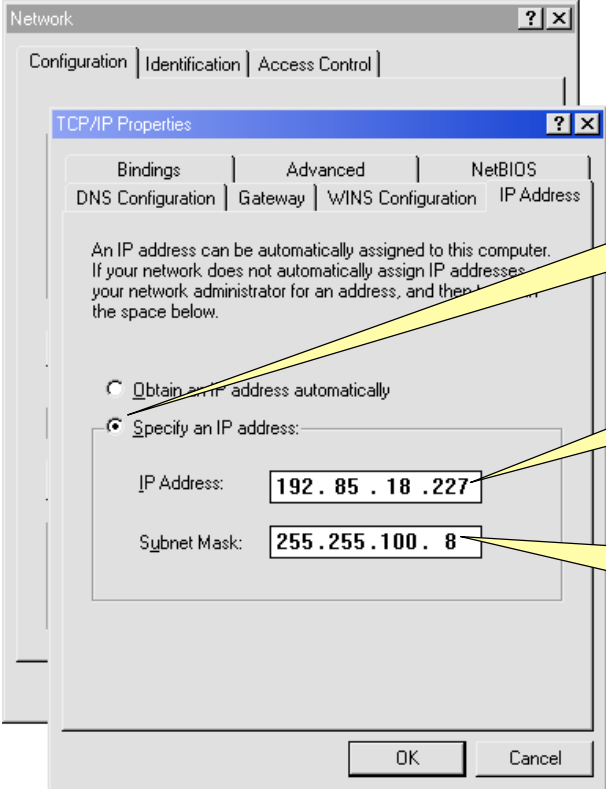
3. Click **Properties**.

Accidentally clicked OK?

If you accidentally click the OK button before you have finished configuring your connection, you will be asked to restart your computer. Click OK. After your computer has restarted, begin this section again starting at step 1.



RESTART

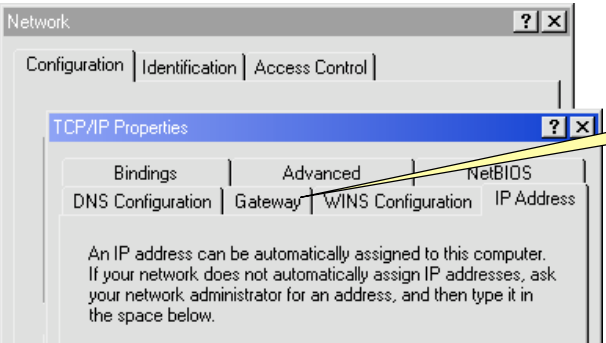


The screenshot shows the 'Network' dialog box with the 'TCP/IP Properties' tab selected. The 'Specify an IP address' radio button is chosen. The 'IP Address' field contains '192.85.18.227' and the 'Subnet Mask' field contains '255.255.100.8'. Three yellow callout boxes provide instructions: 4. Select "Specify an IP address:" by clicking here. This will activate the fields below. 5. Type your IP Address here. Enter it exactly as it appears on your packing slip. 6. Type your Subnet Mask here. Enter it exactly as it appears in the Configuration Info area at the beginning of this section.

4. Select "**Specify an IP address:**" by clicking here. This will activate the fields below.

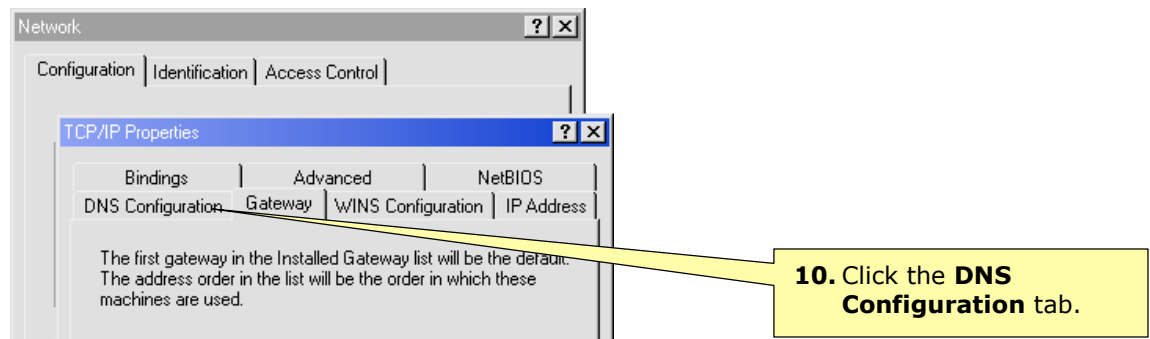
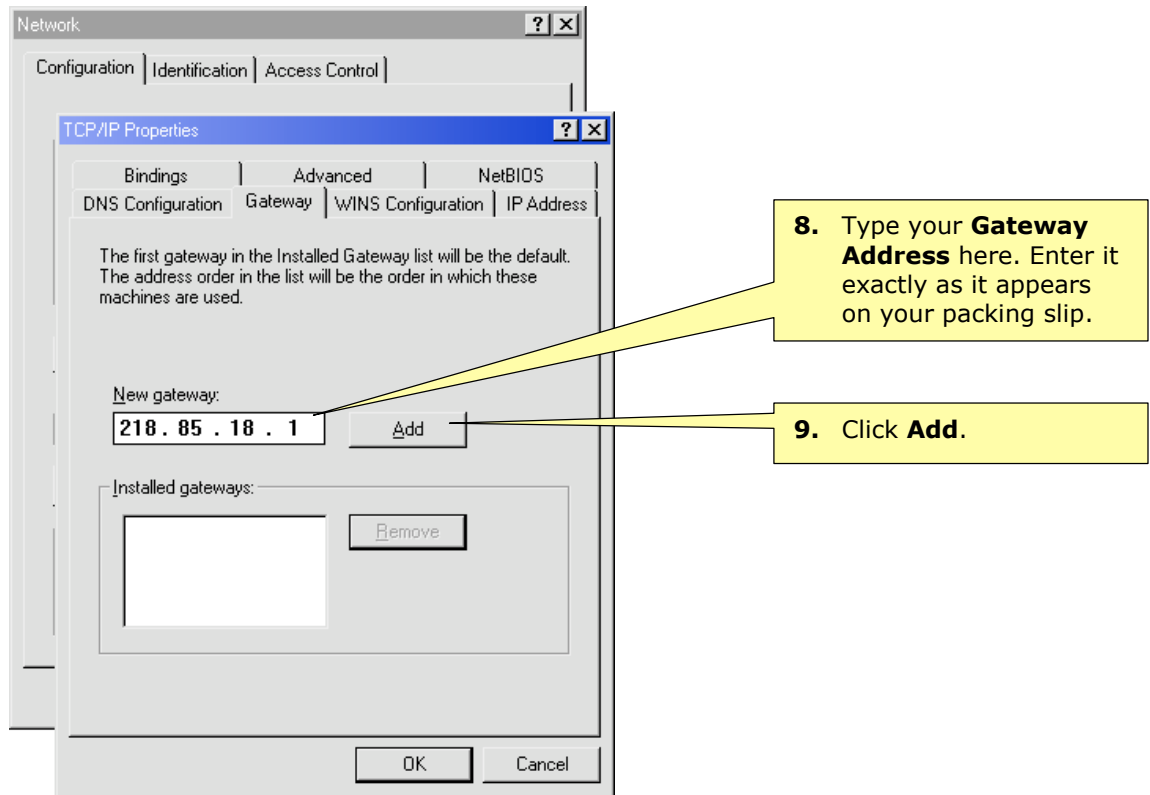
5. Type your **IP Address** here. Enter it exactly as it appears on your packing slip.

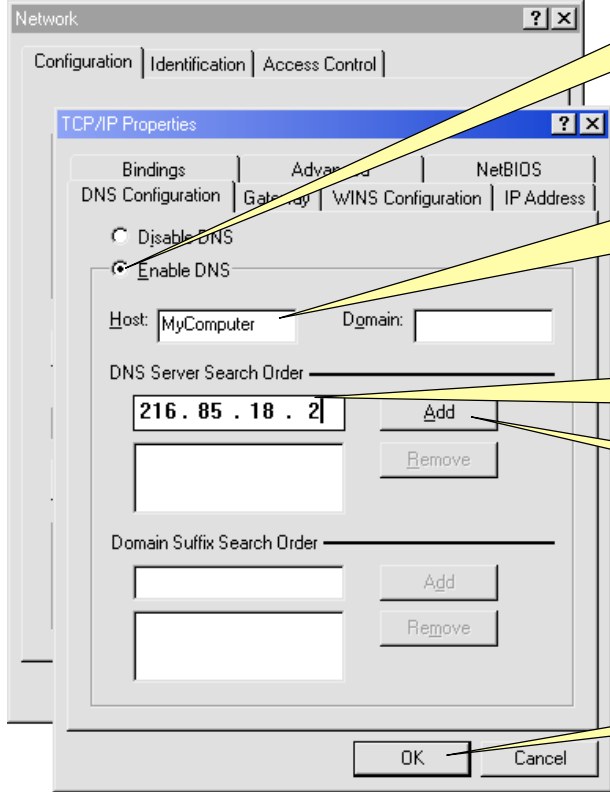
6. Type your **Subnet Mask** here. Enter it exactly as it appears in the Configuration Info area at the beginning of this section.



The screenshot shows the 'Network' dialog box with the 'TCP/IP Properties' tab selected. The 'Gateway' tab is highlighted. A yellow callout box provides instruction: 7. Click the Gateway tab.

7. Click the **Gateway** tab.





11. Select **"Enable DNS"** by clicking here. This will activate the fields below.

12. Type your **Host Name** here. If there is no Host Name listed on your packing slip, type **MyComputer** (with no spaces).


13. Type your **DNS Address** here. Enter it exactly as it appears on your packing slip.

14. Click **Add**.

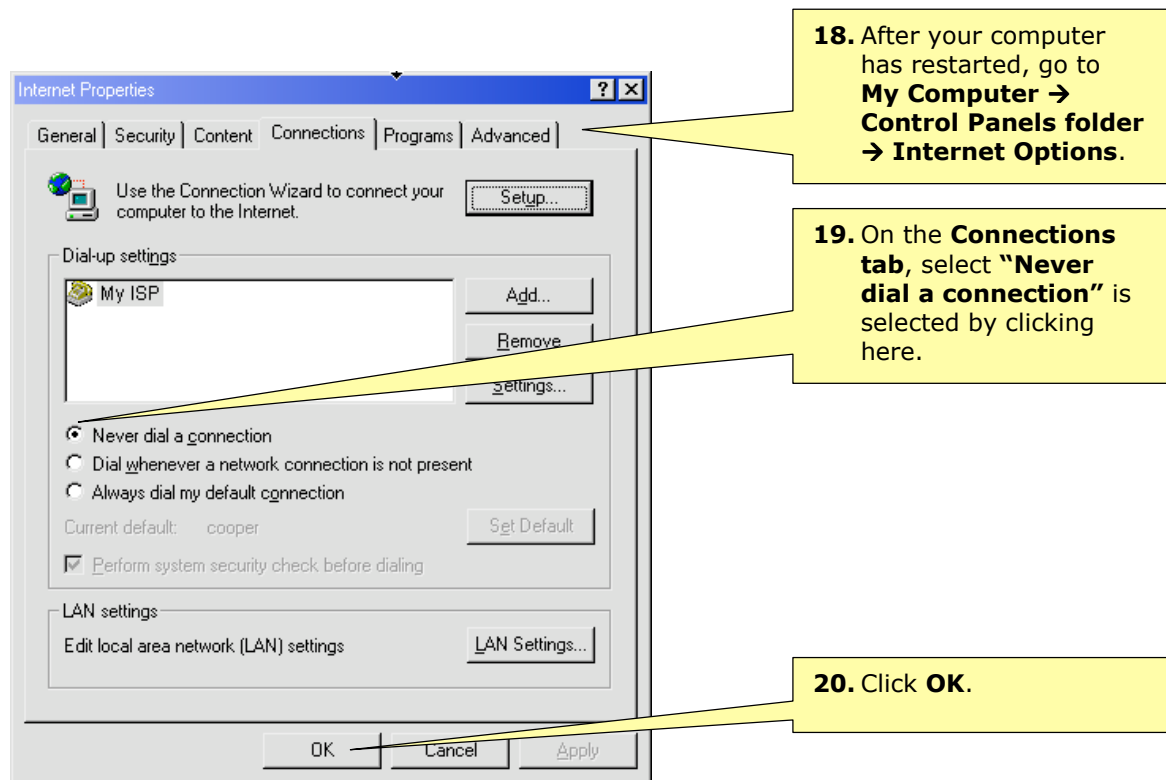
15. Click **OK**.

16. Click **OK** on the **"Network"** window.

17. Restart your computer when asked to do so by clicking **Yes**.



RESTART



✓ Did I do it right?

If you have installed everything correctly:

- You should be able to browse the Internet with your browser
- The LED on the front of your DSL modem should be green
- All of your other telephone devices should work properly
- You should see the Enabled icon for your modem in your system tray:



Driver Loaded icon

Congratulations! The DSL Self-Install process is complete. Enjoy the Internet!